



UNIQ
DIGITAL

ProCAM-CTRL

Professional IP PTZ Camera Controller



4D Joystick



Network+
Serial Control
(RJ45 / RS232 / RS422 / RS485)



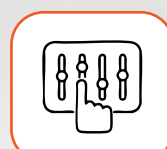
PoE Power
Supply



LCD Display



ONVIF / VISCA
PELCO Protocols



Control Up to
255 Cameras



WEB Upgradable
Firmware

UK | USA | UAE | KSA | QATAR | AFRICA | SINGAPORE | INDIA

Precision at Your Fingertips Control Every Angle.

- The ProCAM-CTRL brings operational mastery to professional PTZ environments. Whether you're directing a live event, monitoring a command center, or managing broadcast cameras, this controller ensures fluid pan, tilt, zoom, and preset operations across large multi-camera setups.
- Equipped with 4D variable-speed joystick, the controller offers natural, analog-feel responsiveness—making camera navigation effortless, precise, and real-time.
- The integrated LCD blue-screen display gives live feedback on active cameras, parameters, and control modes—allowing operators to make quick, confident decisions without losing focus.
- Seamless PoE network support powers both communication and energy over a single cable—reducing clutter and simplifying installation. With compatibility for ONVIF, IP VISCA, VISCA Serial, PELCO-D, and PELCO-P protocols, the ProCAM-CTRL adapts easily to existing camera ecosystems from multiple manufacturers.



Monitor/Laptop

PTZ Camera

AV Interface Product

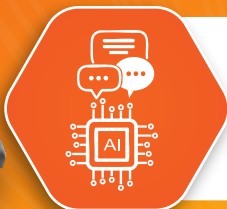
ProCAM-CTRL



Built to Command. Designed to Perform

Multi-Protocol Mastery

Compatible with ONVIF, VISCA, and PELCO standards over IP or Serial connections. This flexibility ensures cross-brand interoperability and reliable performance across surveillance, broadcast, and live production environments.



Intelligent Communication & PoE Support

Operate control and power through a single LAN cable via Power over Ethernet (PoE), simplifying setup and maintenance while minimizing cable clutter.

Scalable Camera Management

Control up to 255 cameras through RJ45, RS232, RS422, or RS485 ports. Each camera ID can be individually configured for specific protocols and baud rates, ensuring full flexibility.



Intuitive 4D Joystick Control

The industrial-grade joystick offers variable-speed pan, tilt, zoom, and lock functions, providing natural movement precision for every shot—ideal for live event direction and smooth transitions..

Real-Time Display & Feedback

The built-in LCD display with prompt tone (ON/OFF) allows real-time feedback on operation mode, selected camera, and adjustment values.



Rugged, Ergonomic Build

Built with a metal-shell and silicone key design, the controller ensures durability and comfort even in extended usage sessions.

Smart Learning Functionality

Unique control code learning allows customization of command behaviors—making the controller adaptive to evolving workflow demands.

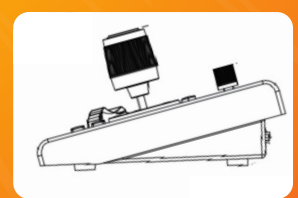
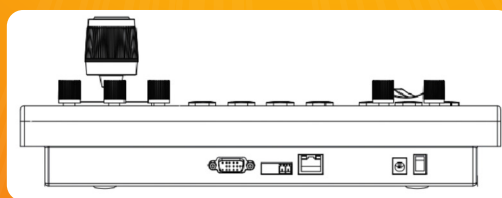
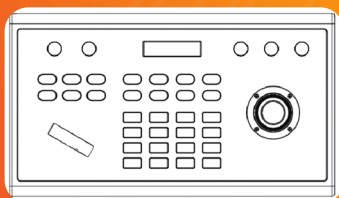


Future-Ready Firmware

Stay updated with WEB-based firmware upgrades, ensuring long-term reliability and support for new camera technologies.

Product Specifications

Parameter	Specifications
Product	4Action ergonomic, professional multi-protocol PTZ joystick controller, designed with convenient, user-friendly buttons and knobs for fast, precise, and reliable camera operations
Model	UNiQ, ProCAM-CTRL
Control types	Serial & Network
Interface Ports	RJ45 DB9 Captive Screws
Serial Protocols Support	RS422 RS232 RS485
IP Protocols Support	ONVIF IP VISCA Serial Port: VISCA PELCO-D PELCO-P
Speed in BPS	2400 / 4800 / 9600 / 19200 / 38400 / 115200
Joystick Model	4D
Joystick Actions	up down left right zoom lock
Display	Blue lit Illumination LCD screen
Knob/Button function	Menu switch Backlight compensation on/off Auto exposure mode auto white balance mode auto focus mode Manual focus adjustment Preset set recall delete Aperture value adjustment Red and blue gain adjustment & more ...
Upgrade	On network by web interface
Power Supply	DC12V / PoE
Power Consumption	6W MAX
Power Adapter	12V,0.5A, DC power adapter for AC100V~ AC240V, 50Hz
Storage Temperature and Humidity	-10°C ~ +70°C @ 10%-90%
Working temperature and Humidity	-0°C ~ +60°C @ 10%-90
Operating Environment	Indoor
L W H - Dimensions in MM	319.8 X 179.4 X 109.8



Applications



Auditorium



NOC / SOC / CCC



Conference-Room



Town Hall



Training Hall

Prestigious Lineup of Cutting-Edge Professional AV Products

Ai Interactive Displays

AiO | Pro | Education Series
65" | 75" | 86" | 98" | 100"



Active LED Video Wall

Indoor & Outdoor LED Walls
CoB, GOB, and
Custom Pixel Pitch Options



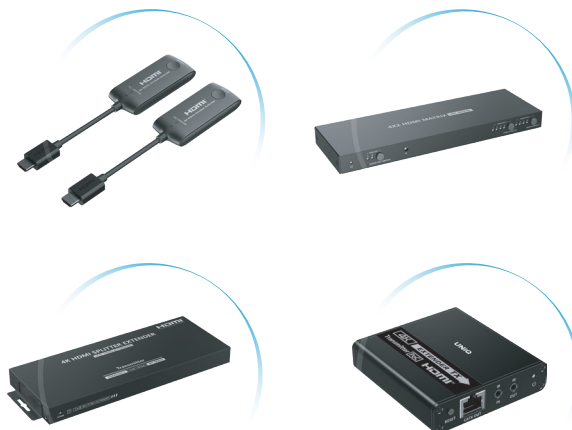
Video Conferencing Products & Professional Cameras

From AI Video Bars to PTZ Cameras
AiO Video Bars | AiO PTZ Video Bars
PTZ Cameras | Speakers Phone
Conferencing | Microphones | DSP



AV Interface Products

Extenders – CAT6 Wireless | Point-Point
KVM Extenders | Over-IP
Matrix & Splitter Cum Extenders
Splitters Switchers | Matrix



Disclaimer

- Specifications, features, visuals, and models are subject to change without notice.
- Product availability and features may vary by region.
- Colours/images shown are for reference only; actual product may differ.
- Warranty terms vary by model and region—refer to official documentation.
- We recommend staying updated via our official channels for the latest info.
- Performance may improve with software/firmware updates.
- All trademarks belong to their respective owners.
- We are not liable for typographical or illustrative errors.
- Please dispose of products responsibly as per local e-waste norms.
- Data (if applicable) is handled per our privacy and regulatory compliance.
- No liability is assumed for indirect or consequential damages